



## GRACIAS-MERCI RAFFLE

**Purpose:** Improve education at South Boulevard Elementary, an EBR public school magnet program in which students are taught entirely in their target foreign language for 60% of their day. By 3<sup>rd</sup> grade, students are becoming fluent in either Spanish or French. Last year, we achieved a 4-star rating, with a State Performance Score of 129.4!

**Prizes:** \$4,000 (1<sup>st</sup>); \$2,000 (2<sup>nd</sup>); \$1,000 (3<sup>rd</sup>), & \$1,000 (consolation prizes worth \$25-50) — unless fewer than 400 tickets are sold, reducing prizes to 20%, 10%, 5%, and 5% (respectively) of total sales.

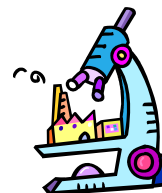
**Feb. 24, 2010:** Draw-down event at 802 Mayflower St., B.R. (5 p.m.). Attendance is not required; however, if present, holders of the last 3 tickets to be drawn may choose to split the winnings equally.

**Tickets:** \$50, cash or check — payable to "FLAIM PTO". Connect with students selling tickets through Scott Herke ([gracias-merci-raffle@cox.net](mailto:gracias-merci-raffle@cox.net)). Sales are ending soon — please act quickly!



### Specific Aims of the GRACIAS-MERCI RAFFLE

- 1) Provide teacher grants - based on educational enhancement proposals they submit to the Parent-Teacher-Organization;
- 2) Purchase books, science gear, computers and software;
- 3) Improve playground equipment, grounds, and classrooms;
- 4) Fund field trips & exhibitions by groups like B.R. Playmakers.



**Website:** Raffle details & updates, an event map, and winning numbers will be posted at [www.sbpto.org](http://www.sbpto.org).

**Profits:** If we sell 400 of the 2000 available tickets, the PTO will generate \$12,000 in profit for the school; by contrast, if we sell all 2000 tickets, the school will benefit from \$92,000 in profits.

---

**OTHER WAYS YOU CAN HELP:** We need creative incentives to encourage our students to sell tickets - due to charitable gaming regulations which prohibit monetary rewards. If you can help with this issue, please email ([gracias-merci-raffle@cox.net](mailto:gracias-merci-raffle@cox.net)) asap! Some incentive possibilities include visits by local celebrities, fascinating demonstrations at the school, or some form of non-cash donations. Incentive providers determine how many students benefit, the date of the incentive, and how often the incentive is provided. Students would compete for the incentives through 'raffles', in which ticket sales determine the number of entries per student.